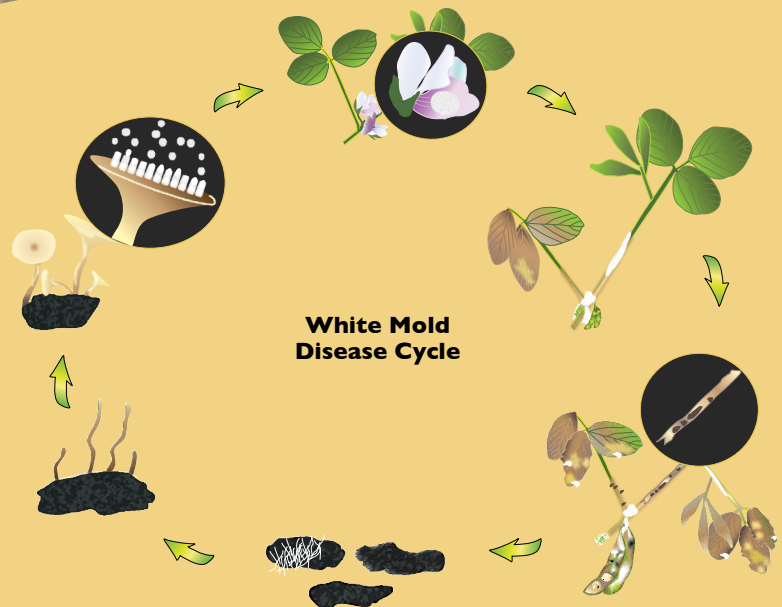




Scouting for White Mold in Soybean



Disease cycle

White mold (also called Sclerotinia stem rot) can substantially reduce yield in soybean. This disease, caused by *Sclerotinia sclerotiorum*, is especially problematic in fields with dense canopies during early reproductive growth stages coupled with rain, fog, or dew. These conditions create a shaded, moist microclimate conducive to disease development.

Sclerotia – Survival structure that is hard and black with a white interior. Can survive for many years if buried, substantially less in reduced tillage fields. Size ranges from about $\frac{1}{16}$ to 1 inch.

Apothecia – Mushroom-like structure growing from sclerotia within the top two inches of soil profile; approximately $\frac{1}{8}$ to $\frac{1}{4}$ inch in diameter, tan, and cup-shaped. Often form when canopy closes.

Ascospores – Microscopic spores that are released by the millions from apothecia. Spores infect dying flowers.

Mycelia – White fungal growth that spreads from dying flowers. Can move to petioles and stems and may spread to adjacent plants. Eventually mycelia form sclerotia, both inside and outside of soybean plant parts.

Risk

Taking accurate notes about where and how much white mold occurs in each soybean field is important for future disease management planning. Tracking disease levels across years will also help determine the potential sclerotia (inoculum) load and the disease risk that may be present in a particular field.

Seasonal and long-term factors favoring white mold risk in soybean include a high yield potential crop with a dense canopy, planting a susceptible variety in a field with a history of white mold, and a history of susceptible crops in the rotation. Factors favoring a dense canopy and white mold risk include early planting, narrow row width, high plant populations, and high soil fertility.



(A) Susceptible flowering soybean variety, (B) apothecia of *Sclerotinia sclerotiorum* which produce ascospores, (C) signs of *S. sclerotiorum* include white tufts of mycelium and sclerotia produced in and outside stem tissue, and (D) sclerotia of *S. sclerotiorum* inside a soybean stem.

Scouting

Check near tree lines or other parts of a field that experience less wind disturbance; parts of the field with thick canopies; and fields with a history of white mold. White mold often occurs in patches within fields. Within these patches, look for scattered dead plants.

Yield loss is more severe when plants die prematurely or stems are girdled. In addition to causing yield loss, white mold can impact seed quality and reduce grain price because of foreign material at the elevator if sclerotia are present. After harvest, check seed lots for sclerotia and infected seeds. Infected seeds are usually smaller; lighter; white, and cottony.



Symptoms of white mold include wilting, lodging, and plant death.



(A) Sclerotia of *Sclerotinia sclerotiorum* in harvested grain and (B) infected seed with a sclerotium in a pod.

Management

Building a management plan based on field history and best disease management practices can help reduce losses due to white mold and minimize sclerotia development for future years. Integrate several management tactics that include varietal resistance, cultural practices, and chemical and biological control products.

Fields at high risk for white mold at flowering stage (R1) may require a fungicide application and possibly a follow-up application at beginning pod stage (R3) in severe epidemic conditions. Some PPO inhibitor herbicides also may be effective at managing white mold.



Choosing resistant soybean varieties is the best method of reducing white mold, especially in conjunction with other best disease management practices. This shows a white mold susceptible variety in front of a resistant variety.

Pesticides currently registered for suppression or control of white mold on soybean.

Product type	Active ingredient	Product name
Fungicide	Thiophanate methyl	Topsin®, Incognito®, others
Fungicide	Boscalid	Endura®
Fungicide	Fluazinam	Omega® and Allegro®
Fungicide	Tetraconazole	Domark®
Fungicide	Prothioconazole	Proline®
Fungicide	Picoxystrobin	Approach™ and Acapela®
Fungicide	Fluxapyroxad and Pyraclostrobin	Priaxor®
Fungicide	Penthiopyrad	Vertisan®
Fungicide	Flutriafol	Topguard®
Fungicide	Prothioconazole and Trifloxystrobin	Stratego® YLD and Stratego® Pro
Herbicide	Lactofen	Cobra® and Phoenix™
Biocontrol	<i>Coniothyrium minitans</i>	Contans® and KONI®
Biocontrol	<i>Bacillus subtilis</i>	Serenade®

Note: Check with your local Extension Service or State/Provincial Department of Agriculture to determine whether a product is registered in your state or country for white mold on soybean.

Acknowledgments

Authors

Daren Mueller, Iowa State University; Carl Bradley, University of Illinois; Martin Chilvers, Michigan State University; Loren Giesler, University of Nebraska-Lincoln; Adam Sisson, Iowa State University; Damon Smith, University of Wisconsin; Albert Tenuta, Ontario Ministry of Agriculture; Kiersten Wise, Purdue University

Reviewers

Emmanuel Byamukama, South Dakota State University; Anne Dorrance, The Ohio State University; Doug Jardine, Kansas State University; Dean Malvick, University of Minnesota; Michael Wunsch and Samuel Markell, North Dakota State University; Laura Sweets, University of Missouri

Photographs

All photos were provided by and are the property of the authors except the top two images on Risk page, top and lower left images on Scouting page, and image on Management page courtesy Craig Grau, University of Wisconsin. Disease cycle illustrated by Renée Tesdall.

Sponsors

The Soybean Disease Management series is a multi-state collaboration sponsored by the North Central Soybean Research Program (NCSRP). This project was funded in part through *Growing Forward 2 (GF2)*, a federal-provincial territorial initiative. The Agricultural Adaption Council assists in the delivery of GF2 in Ontario. Contributors to this series come from land-grant universities in the North Central states and Canada.

NCSRP NORTH CENTRAL SOYBEAN
RESEARCH PROGRAM



United States Department of Agriculture
National Institute of Food and Agriculture



Our soybean checkoff.
Effective. Efficient. Farmer-Driven.

© 2015 | All Rights Reserved | Crop Protection Network

This information is provided only as a guide, and the authors assume no liability for practices implemented based on this information.

The Crop Protection Network is a multi-state and international collaboration of university/provincial Extension specialists and public/private professionals that provides unbiased, research-based information to farmers and agricultural personnel.

The U.S. Department of Agriculture (USDA) prohibits discrimination in all its programs and activities on the basis of race, color, national origin, age, disability, and where applicable, sex, marital status, familial status, parental status, religion, sexual orientation, genetic information, political beliefs, reprisal, or because all or a part of an individual's income is derived from any public assistance program. (Not all prohibited bases apply to all programs.) Persons with disabilities who require alternative means for communication of program information (Braille, large print, audiotape, etc.) should contact USDA's TARGET Center at (202) 720-2600 (voice and TDD). To file a complaint of discrimination write to USDA, Director, Office of Civil Rights, 1400 Independence Avenue, S.W., Washington, D.C. 20250-9410 or call (800) 795-3272 (voice) or (202) 720-6382 (TDD). USDA is an equal opportunity provider and employer.