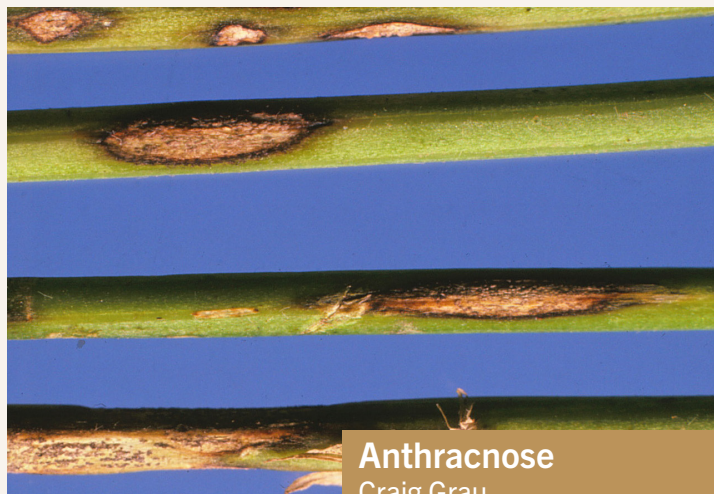




Fungicide Efficacy for Control of Alfalfa Diseases

The **North Central Integrated Pest Management Alfalfa Working Group** has developed ratings for how well fungicides control major alfalfa diseases in the United States. This group determined efficacy ratings for each fungicide listed in the table by field testing the materials over multiple years and locations. Ratings are based on the product's level of disease control only. A product's efficacy depends upon proper application timing, rate, and application method as determined by the product label and overall disease level in the field at the time of application. Differences in efficacy among each fungicide product were determined by comparing products in University field testing programs. For application timing and use considerations, please contact your local cooperative extension service. **Products listed in the table are labeled for pure alfalfa stands. Not all products listed are labeled for use in mixed alfalfa/grass stands.** The table is not intended to be a list of all labeled products, and products may be labeled to control additional diseases such as downy mildew, powdery mildew, and rust. Many products have specific use restrictions about the amount of active ingredient that can be applied within a period of time or the amount of sequential applications that can occur.

Read and follow all use restrictions prior to applying any fungicide.



Anthracnose
Craig Grau



Stemphylium leaf spot
Deborah Samac

Find Out More

The Crop Protection Network (CPN) is a multistate and international collaboration of university and provincial extension specialists, and public and private professionals who provide unbiased, research-based information to farmers and agricultural personnel. Our goal is to communicate relevant information that will help professionals identify and manage field crop diseases.

Find more crop disease resources at
CropProtectionNetwork.org



We Are Extension

This publication was developed by members of Alfalfa Pest Management Working Group and compiled by Kiersten Wise, University of Kentucky.

This work was supported by the USDA National Institute of Food and Agriculture, Crop Protection and Pest Management Program through the North Central IPM Center (2022-70006-38001).

This information is provided only as a guide. It is the applicator's legal responsibility to read and follow all current label directions. Reference in this publication to any specific commercial product is for general information only, and does not constitute an endorsement or recommendation by the Crop Protection Network or the NCIPM Alfalfa Working Group. Individuals using such products assume responsibility for their use in accordance with current directions of the manufacturer. Members or participants in the Crop Protection Network or the NCIPM Alfalfa Working Group assume no liability resulting from the use of these products. In accordance with Federal civil rights law and U.S. Department of Agriculture (USDA) civil rights regulations and policies, the USDA, its Agencies, offices, and employees, and institutions participating in or administering USDA programs are prohibited from discriminating based on race, color, national origin, religion, sex, gender identity (including gender expression), sexual orientation, disability, age, marital status, family/parental status, income derived from a public assistance program, political beliefs, or reprisal or retaliation for prior civil rights activity, in any program or activity conducted or funded by USDA (not all bases apply to all programs). Remedies and complaint filing deadlines vary by program or incident. Persons with disabilities who require alternative means of communication for program information (e.g., Braille, large print, audiotape, American Sign Language, etc.) should contact the responsible Agency or USDA's TARGET Center at (202) 720-2600 (voice and TTY) or contact USDA through the Federal Relay Service at (800) 877-8339. Additionally, program information may be made available in languages other than English. To file a program discrimination complaint, complete the USDA Program Discrimination Complaint Form, AD-3027, found online at How to File a Program Discrimination Complaint and at any USDA office or write a letter addressed to USDA and provide in the letter all of the information requested in the form. To request a copy of the complaint form, call (866) 632-9992. Submit your completed form or letter to USDA by: (1) mail: U.S. Department of Agriculture, Office of the Assistant Secretary for Civil Rights, 1400 Independence Avenue, SW, Washington, D.C. 20250-9410; (2) fax: (202) 690-7442; or (3) email: program.intake@usda.gov.

USDA is an equal opportunity provider, employer, and lender.
©2025 by the Crop Protection Network. All rights reserved.



Fungicide Efficacy for Control of Alfalfa Diseases Table (07/2025)

Products listed in the table are labeled for use in pure alfalfa stands. Not all products listed are labeled for use in mixed alfalfa/grass stands.

Efficacy categories:

P = Poor; F = Fair; G = Good; VG = Very Good; E = Excellent; NL = Not labeled for use against this disease; U = Labeled, but unknown efficacy or insufficient data to rank product.

Fungicide mode of action groups:

Group 11 QoI Strobilurins Group 3 DMI Triazoles Group 7 SDHI Carboxamides

		Active ingredient (%)	Product/Trade name	Rate/A (fl oz) unless specified	Anthracnose	Common leaf spot	Leptosphaerulina leaf spot	Spring black stem and leaf spot	Stemphylium leaf spot	Summer black stem and leaf spot	Yellow leaf blotch	Sclerotinia stem and root rot	Harvest Restriction
QoIs	11	Picoxystrobin 22.5%	Aproach 2.08 SC	6.0 - 12.0	NL	P	U ¹	U	U	NL	NL	NL	14 days
		Pyraclostrobin 23.6%	Headline 2.09 EC/SC	6.0 - 12.0	U	P	P	U	U	U	U	NL	14 days
		Azoxystrobin 22.9%	Quadris 2.08 SC, multiple generics	6.0 - 15.5	U	P	P	U	U	U	U	U	14 days
SDHIs	7	Boscalid 70%	Endura 0.7 DF	3.5 - 11.0	NL	U	U	U	NL	NL	NL	U	14 days
		Penthiopyrad 20.4%	Fontelis 1.67 SC	12.0 - 24.0	NL	NL	NL	NL	U	NL	NL	U	14 days
Mixed modes of action	11	Fluxapyroxad 14.3%	Priaxor 4.17 SC	4.0 - 6.9	U	G	F - G	U	U	U	U	NL	14 days
	7	Pyraclostrobin 28.6%											
	11	Pyraclostrobin 12.8%	Pristine 0.38 WG	12.0 - 18.0 oz/A	U	U	U	U	U	U	U	U	14 days
	7	Boscalid 25.2%											
	11	Pyraclostrobin 17.56%	Veltyrna 3.34 SC	7.0 - 10.0	U	U	U	U	U	U	U	NL	14 days
	3	Mefentrifluconazole 17.56%											

¹ Labeled for disease suppression only

